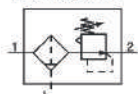
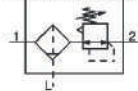


Symbol

Filter Regulator

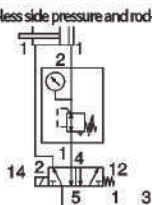


Filter Regulator with Backflow Function

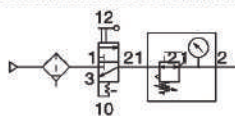


• Models with the backflow function include a mechanism which allows for the air pressure in the outlet side to be released to the inlet side

Note1) When the rod-less side pressure and rod-side pressure of the cylinder are different



Note2) When the air supply is cut off and releasing the inlet pressure to the atmosphere, the residual pressure release of the outlet side can be ensured for a safety purpose.



Ordersymbol

AW30K-03BE-B

- Option/Semi-standard: Select one each for a to h.
- Option/Semi-standard symbol: When more than one specification is required, indicate in alphanumeric order. Example: AW30K-03BE-1H-B.

		Symbol	Description	Body size					
				20	30	40	45	50	60
2	With backflow function	Nil	Without backflow function	●	●	●	●	●	●
		K	With backflow function	●	●	●	●	●	●
3	Pipe thread type	Rc	Rc	●	●	●	●	●	●
		N	NPT	●	●	●	●	●	●
		F	G	●	●	●	●	●	●
4	Port size	01	1/8	●	—	—	—	—	—
		02	1/4	●	●	●	—	—	—
		03	3/8	—	●	●	—	—	—
		04	1/2	—	—	●	—	—	—
		06	3/4	—	—	—	●	●	●
		1	1	—	—	—	●	●	●
5	a Mounting	Nil	Without mounting option	●	●	●	●	●	●
		B	With bracket	●	●	●	●	●	●
		H	With set nut (for panel mount)	●	●	●	—	—	—
	b Float type auto drain	Nil	Without auto drain	●	●	●	●	●	●
		C	N.C. (Normally closed) Drain port is closed when pressure is not applied.	●	●	●	●	●	●
		D	N.O. (Normally open) Drain port is open when pressure is not applied.	—	●	●	●	●	●
	c Pressure gauge	Nil	Without pressure gauge	●	●	●	●	●	●
		E	Square embedded type pressure gauge (with limit indicator)	●	●	●	●	●	●
		G	Round type pressure gauge (without limit indicator)	●	●	●	●	●	●
		E1	Output: NPN output, Electrical entry: Wiring bottom entry	●	●	●	●	●	●
		E2	Output: NPN output, Electrical entry: Wiring top entry	●	●	●	●	●	●
		E3	Output: PNP output, Electrical entry: Wiring bottom entry	●	●	●	●	●	●
6	d Set pressure	Nil	0.05 ~ 0.85 MPa setting	●	●	●	●	●	●
		1	0.02 ~ 0.2 MPa setting	●	●	●	●	●	●
	e Bowl ^(Note11)	Nil	Polycarbonate bowl	●	●	●	●	●	●
		2	Metal bowl	●	●	●	●	●	●
		8	Metal bowl with level gauge	—	●	●	●	●	●
		C	With bowl guard	●	●	●	●	●	●
	f Drain port ^(Note14)	Nil	With bowl guard	●	●	●	●	●	●
		J	Drain guide 1/8	●	—	—	—	—	—
		W	Drain cock with barb fitting	—	●	●	●	●	●
	g Exhaust mechanism	Nil	Relieving type	●	●	●	●	●	●
		N	Non-relieving type	●	●	●	●	●	●
	h Flow direction	Nil	Flow direction: Left to right	●	●	●	●	●	●
		R	Flow direction: Right to left	●	●	●	●	●	●

Common specification

Model	AW20-B	AW30-B	AW40-B	AW45-B	AW60-B
Port size	1/8, 1/4	1/4, 3/8	1/4, 3/8, 1/2	3/4, 1	3/4, 1
Pressure gauge port size ¹	1/8				
Fluid	Air				
Ambient and fluid temperature ²	-5 to 60°C (with no freezing)				
Proof pressure	1.5 MPa				
Maximum operating pressure	1.0 MPa				
Set pressure range	0.05 ~ 0.85 MPa				
Nominal filtration rating	5 μm				
Drain capacity (cm ³)	8	25	45		
Bowl material	Polycarbonate				
Bowl guard	Semi-standard (Steel)	Standard (Polycarbonate)			
Construction	Relieving type				
Weight (kg)	0.20	0.36	0.66	0.72	2.05

¹ Pressure gauge connection threads are not available for F.R.L. unit with a square embedded type pressure gauge or with a digital pressure switch.

² -5 to 50°C for the products with the digital pressure switch

Cup assembly type

Bowl material	Drain discharge mechanism	Drain port	Other	Model				
				AW20-B	AW30-B	AW40-B	AW45-B	AW60-B
Polycarbonate	Manual	With drain cock	—	C2SF-A	—	—	—	—
		With bowl guard	—	C2SF-C-A	C3SF-A	C4SF-A		
		Drain cock with barb fitting	With bowl guard	—	C3SF-W-A	C4SF-W-A		
		With drain guide (without valve function)	—	C2SF-J-A	—	—		
	Automatic ¹ (Auto drain)	Normally closed (N.C.)	With bowl guard	C2SF-J-A	C3SF-J-A	C4SF-J-A		
		Normally open (N.O.)	With bowl guard	AD27-A	—	—		
Metal	Manual	With drain cock	—	AD27-C-A	AD37-A	AD47-A		
		With bowl guard	—	AD38-A	—	AD48-A		
		With drain guide (without valve function)	With level gauge	C2SF-2-A	C3SF-2-A	C4SF-2-A		
		With level gauge	—	C3LF-8-A	—	C4LF-8-A		
	Automatic ¹ (Auto drain)	Normally closed (N.C.)	—	C2SF-J-A	C3SF-J-A	C4SF-J-A		
		With level gauge	—	C3LF-8-A	—	C4LF-8-A		
		Normally open (N.O.)	—	AD27-2-A	AD37-2-A	AD47-2-A		
		With level gauge	—	AD37-8-A	—	AD47-8-A		
		Normally open (N.O.)	—	AD38-2-A	—	AD48-2-A		
		With level gauge	—	AD38-8-A	—	AD48-8-A		

¹ Minimum operating pressure: N.O. type-0.1 MPa (AD38-A, AD48-A); N.C. type-0.1 MPa (AD27-A) and 0.15 MPa (AD37-A, AD47-A).

Bowl assembly comes with a bowl seal.

□ in bowl assembly part numbers indicates a pipe thread type (applicable tubing for auto drain).

No indication is necessary for Rc thread; however, indicate N for NPT thread, and F for G thread. (For auto drain, Nil: ø10, N: ø3/8")

Please consult with SMC separately for psi and nF unit display specifications.

Flow characteristics (Representative values)

Condition: Inlet pressure 0.7 MPa

