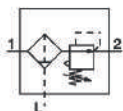


Symbol



Ordersymbol

AC30 B - 03 DE - - B

1 2 3 4 5 6

- Option/Semi-standard: Select one each for a to j.
 - Option/Semi-standard symbol: When more than one specification is required, indicate in alphanumeric order.
- Example) AC30B-F03DE1-SV-16NR-B



		Symbol	Description	1									
				Body size									
				20	25	30	40	45	50	55	60		
2	Pipe thread type	Nil	Rc	●	●	●	●	●	●	●	●		
		N	NPT	●	●	●	●	●	●	●	●		
		F	G	●	●	●	●	●	●	●	●		
+													
3	Port size	01	1/8	●	—	—	—	—	—	—	—		
		02	1/4	●	●	●	—	—	—	—	—		
		03	3/8	—	●	●	—	—	—	—	—		
		04	1/2	—	—	—	●	—	—	—	—		
		06	3/4	—	—	—	—	●	●	—	—		
		10	1	—	—	—	—	●	●	●	●		
+													
4	Option	a	Float type auto drain	Nil	Without auto drain	●	●	●	●	●	●	●	
				C ^{Note 1)}	N.C. (Normally closed) Drain port is closed when pressure is not applied.	●	●	●	●	●	●	●	
				D ^{Note 2)}	N.O. (Normally open) Drain port is open when pressure is not applied.	—	●	●	●	●	●	●	
		+											
		b	Pressure gauge ^{Note 3)}	Nil	Without pressure gauge	●	●	●	●	●	●	●	●
				E	Square embedded type pressure gauge (with limit indicator)	●	●	●	●	●	●	●	●
				G	Round type pressure gauge (without limit indicator)	●	●	●	●	●	●	●	●
				M	Round type pressure gauge (with color zone)	●	●	●	●	●	●	●	●
			Digital pressure switch	E1	Output: NPN output, Electrical entry: Wiring bottom entry	●	●	●	●	●	●	●	●
				E2	Output: NPN output, Electrical entry: Wiring top entry	●	●	●	●	●	●	●	●
				E3	Output: PNP output, Electrical entry: Wiring bottom entry	●	●	●	●	●	●	●	●
				E4	Output: PNP output, Electrical entry: Wiring top entry	●	●	●	●	●	●	●	●
+													
5	Attachment	c	Pressureswitch	Nil	Without attachment	●	●	●	●	●	●	●	
				S	Mounting position: AF+S+AR	●	●	●	●	●	●	●	●
				T-spacer	T	Mounting position: AF+T+AR	●	●	●	●	●	●	●
		+											
		d	Pressure relief 3 port valve	Nil	Without attachment	●	●	●	●	●	●	●	●
				V	Mounting position: AF+AR+V	●	●	●	●	●	—	—	—
1	Mounting position: V+AF+AR□JK			●	●	●	●	●	—	—	—		
+													
6	Semi-standard	e	Set pressure	Nil	0.05 ~ 0.85 MPa setting	●	●	●	●	●	●	●	
				1	0.02 ~ 0.2 MPa setting	●	●	●	●	●	●	●	●
		+											
		f	Bowl	Nil	Polycarbonate bowl	●	●	●	●	●	●	●	●
				2	Metal bowl	●	●	●	●	●	●	●	●
				8	Metal bowl with level gauge	—	●	●	●	●	●	●	●
				C	With bowl guard	●	—	—	—	—	—	—	—
		+											
		g	Air filter drain por	Nil	With bowl guard	●	●	●	●	●	●	●	●
				J	Drain guide 1/8	●	—	—	—	—	—	—	—
				W	Drain guide 1/4	—	●	●	●	●	●	●	●
		+											
				Drain cock with barb fitting(For ø6x ø4 nylon tube)	—	●	●	●	●	●	●	●	

Ordersymbol

	Symbol	Description	①							
			Body size							
			20	25	30	40	45	50	55	60
⑥	h	Exhaust mechanism	Nil	Relieving type	●	●	●	●	●	●
			N	Non-relieving type	●	●	●	●	●	●
	i	+			●	●	●	●	●	●
		Flow direction	Nil	Flow direction: Left to right	●	●	●	●	●	●
			R	Flow direction: Right to left	●	●	●	●	●	●
					●	●	●	●	●	●

Note 1) When pressure is not applied, condensate which does not start the auto drain mechanism will be left in the bowl. Releasing the residual condensate before ending operations for the day is recommended.

Note 2) If the compressor is small (0.75 kW, discharge flow is less than 100 L/min[ANR]), air leakage from the drain cock may occur during start of operations. N.C. type is recommended.

Note 3) When the pressure gauge is attached, a 1.0 MPa pressure gauge will be fitted for standard (0.85 MPa) type. 0.4 MPa pressure gauge for 0.2 MPa type.

Commonspecification

Model		AC20B-B	AC30B-B	AC40B-B	AC45B-B	AC50B-B	AC60B-B
Component	Air Filter [AF]	AF20-A	AF30-A	AF40-A	AF45-A	AF50-A	AF60-A
	Regulator [AR]	AR20-B	AR30-B	AR40-B	AR45-B	AR50-B	AR60-B
Port size		1/8, 1/4	1/4, 3/8	1/4, 3/8, 1/2	3/4	3/4, 1	1
Pressure gauge port size [AR] ^{Note 1)}		1/8					
Fluid		Air					
Ambient and fluid temperature ^{Note 2)}		−5 to 60°C (with no freezing)					
Proof pressure		1.5 MPa					
Maximum operating pressure		1.0 MPa					
Set pressure range [AR]		0.05 ~ 0.85 MPa					
Nominal filtration rating [AF]		5 μm					
Bowl material [AF]		Polycarbonate					
Bowl guard [AF]		Semi-standard (Steel)	Standard (Polycarbonate)				
Construction [AR]		Relieving type					
Weight [kg]		0.27	0.53	0.91	0.99	2.27	2.45

Note 1) Pressure gauge connection threads are not available for F.R.L. unit with a square embedded type pressure gauge or with a digital pressure switch.

Note 2) -5 to 50°C for the products with the digital pressure switch