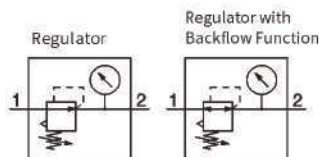
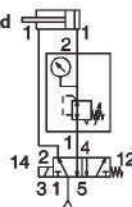


Symbol

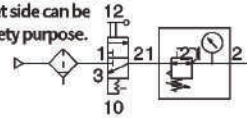


• Models with the backflow function include a mechanism which allows for the air pressure in the outlet side to be released to the inlet side.

Example 1)
When the pressure in the rear and the front of the cylinder differs:



Example 2)
When the air supply is cut off and releasing the inlet pressure to the atmosphere, the residual pressure release of the outlet side can be ensured for a safety purpose.



ARG40-B-ARG40K-B

Ordersymbol

ARG 30 K - 03 G1 - B -





1 2 3 4 5 6 7

Made to Order

• Option/Pressure gauge/Semi-standard: Select one each for a to f.
• Option/Semi-standard symbol: When more than one specification is required, indicate in alphanumeric order.
Example) ARG30K-03G1H-1N-B

		Symbol	Description	①				
				Body size				
				20	30	40		
②	With backflow function	Nil	Without auto drain	●	●	●		
		K ¹	With backflow function	●	●	●		
+								
③	Pipe thread type	Nil	Rc	●	●	●		
		N	NPT	●	●	●		
		F	G	●	●	●		
+								
④	Port size	01	1/8	●	—	—		
		02	1/4	●	●	●		
		03	3/8	—	●	●		
		04	1/2	—	—	●		
+								
⑤	Option ² a	Mounting	Nil	Without mounting option	●	●	●	
			B ³	With bracket	●	●	●	
			H	With set nut (for panel mount)	●	●	●	
+								
⑥	b	Mounting angle of pressure gauge ⁴	G1	0°	Mounting angle view: Refer to the next page	●	●	●
			G2	90°		●	●	●
			G3	180°		●	●	●
			G4	270°		●	●	●
+								
⑦	Semi-standard	c	Set pressure	Nil	0.05~0.85MPa setting	●	●	●
				1	0.02~0.2MPa setting	●	●	●
		+						
		d	Exhaust mechanism	Nil	Relieving type	●	●	●
N	Non-relieving type			●	●	●		
+								
e		Nil	Downward	●	●	●		
		Y	Upward	●	●	●		

Mounting angle of pressure gauge

Symbol	G1	G2	G3	G4
Gauge angle	0°	90°	180°	270°
Mounting angle view				

*1 Set the inlet pressure to at least 0.05 MPa higher than the set pressure.

*2 Options B and H are not assembled and supplied loose at the time of shipment.

*3 Assembly of a bracket and set nuts

*4 When the pressure gauge is attached, a 1.0 MPa pressure gauge will be fitted for standard (0.85 MPa) type. 0.3 MPa pressure gauge for 0.2 MPa type.